

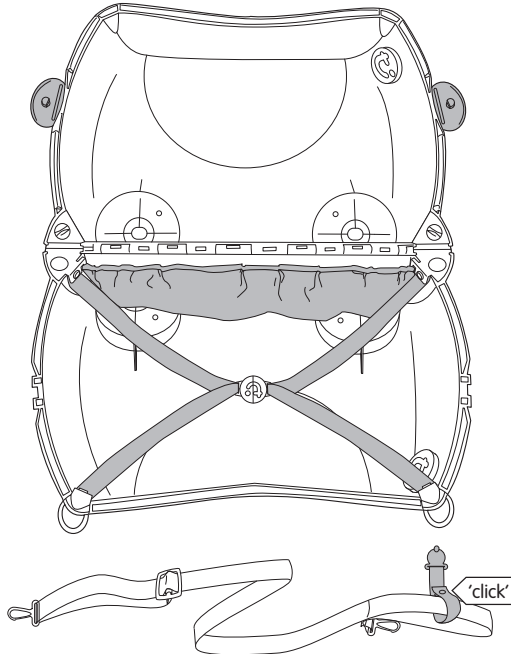
Warning
 This upgrade kit is **ONLY** compatible with the MK2 Trunki, identifiable by any of the following features:

- Secret Compartments
- Came with Passport
- Catches open both sides
- Luggage ID tag on strap

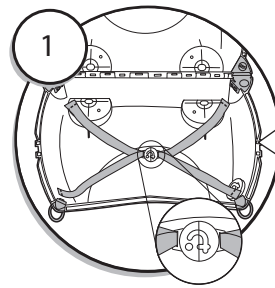
trunki

luggage for little people

15 easy steps to upgrade your trunki

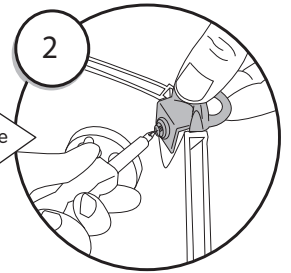


Don't lose your trunki key, click it onto your strap

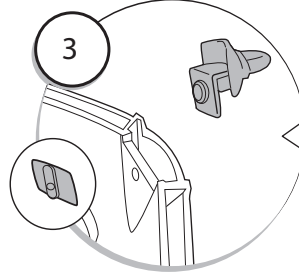


Please note it is important follow these steps in turn, one by one!

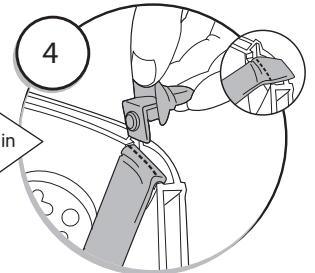
Open out your Trunki and place the internal strap in the case as illustrated. Make sure logo is the correct way round.



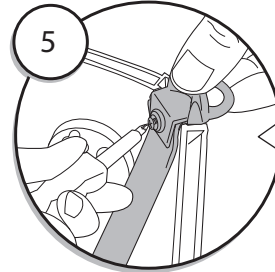
Unscrew one of the two strap loops using a standard screw driver. (Keep hold of the lose screw)



Remove the strap loop and discard of the lose plastic insert (see illustration).

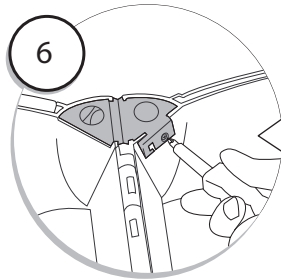


Align the line on the strap with the edge hole and fold over. Now replace the loop in the hole, over the strap.



With the screw you previously removed, firmly screw the strap loop into place, but be careful not to over tighten.

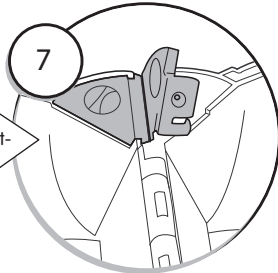
Repeat for the other side



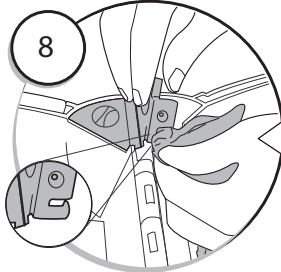
1-10 Fitting the internal pouch and straps

Unscrew one of the two secret compartments using a standard cross headed screwdriver. (Keep hold of the lose screw)

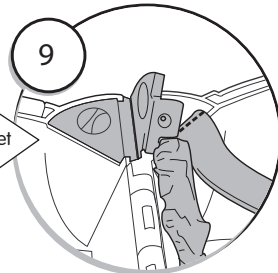
Lift open the side you have just unscrewed, but do not remove the compartment completely.



Slide one end of the internal pouch over the hook as illustrated. Make sure the hook ends up on the inside of the pouch.

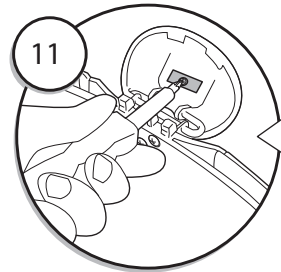
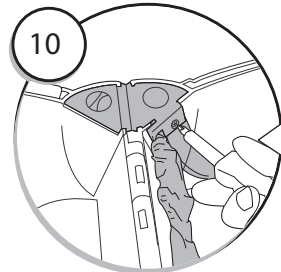


As in step 4 align the marking on the strap with the hole and then close the secret compartment over the strap.



With the screw you previously removed, firmly screw the secret compartment into place, but be careful not to over tighten.

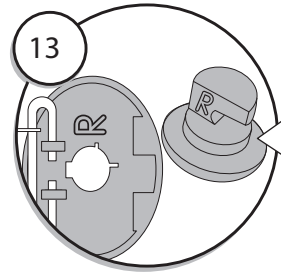
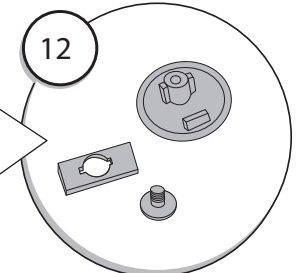
Repeat for the other side



11-15 Fitting the new locks to the catches

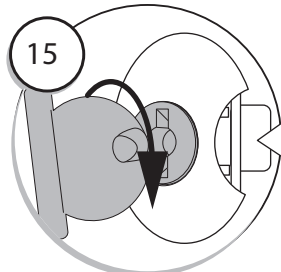
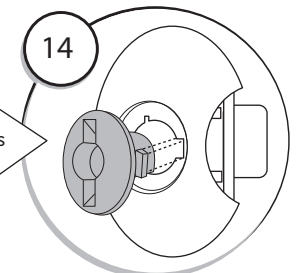
Unscrew the one screw in the centre of the catch.

Remove and discard the screw and the two components released by the screw



Select the lock with a matching embossed letter to the catch. e.g. 'L' with 'L' & 'R' with 'R'

From the front face of the catch, line up the lock with the hole, making sure the tabs are aligned, then push it through.



Insert the key and rotate with a bit of force embossed L = 90° clockwise embossed R = 90° anti-clockwise

To lock the catch turn the key a further 90° in the same direction when the case is closed.